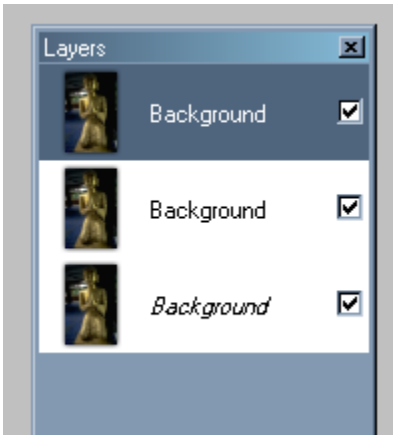
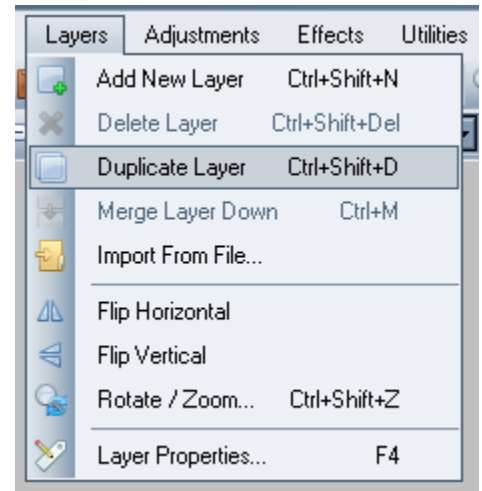


## Optimizing your eBay photos with paint.net

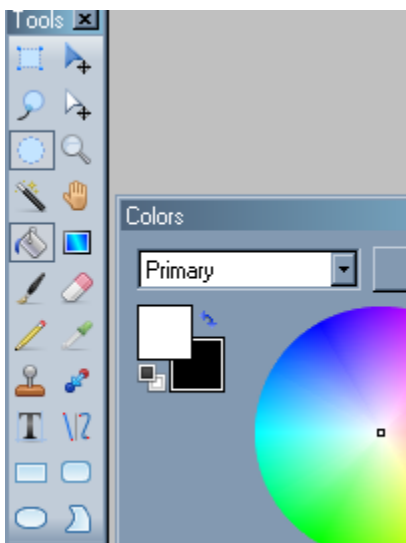
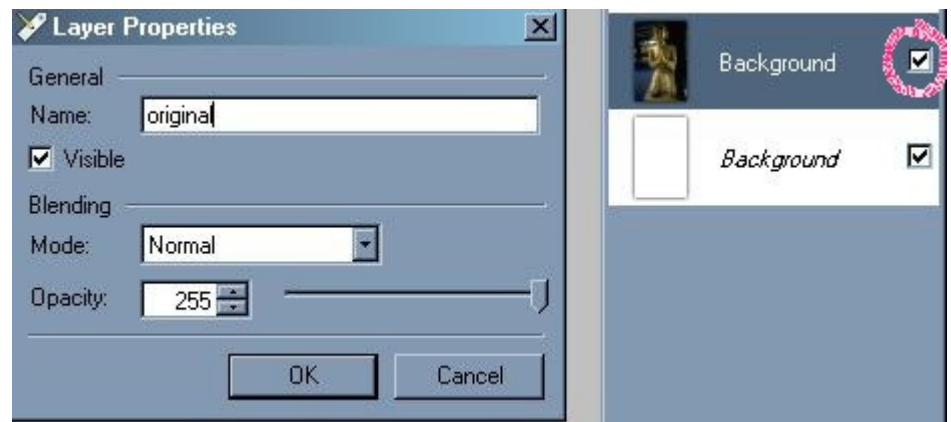
This tutorial will show you how to do a few things using paint.net. (You can download paint.net for free from <http://paint.net/>.)

First, open paint.net, then open your photo under File>Open. Then duplicate the layer under Layers>Duplicate Layer as in image to the right. Duplicate the layer once more. You'll see your photo 3 times in the Layers pallet:



Select the 2<sup>nd</sup> layer and double-click on the word Background to open the Layer Properties window. Rename this layer original, click OK, then uncheck the box next to original in the Layers pallet to hide it:

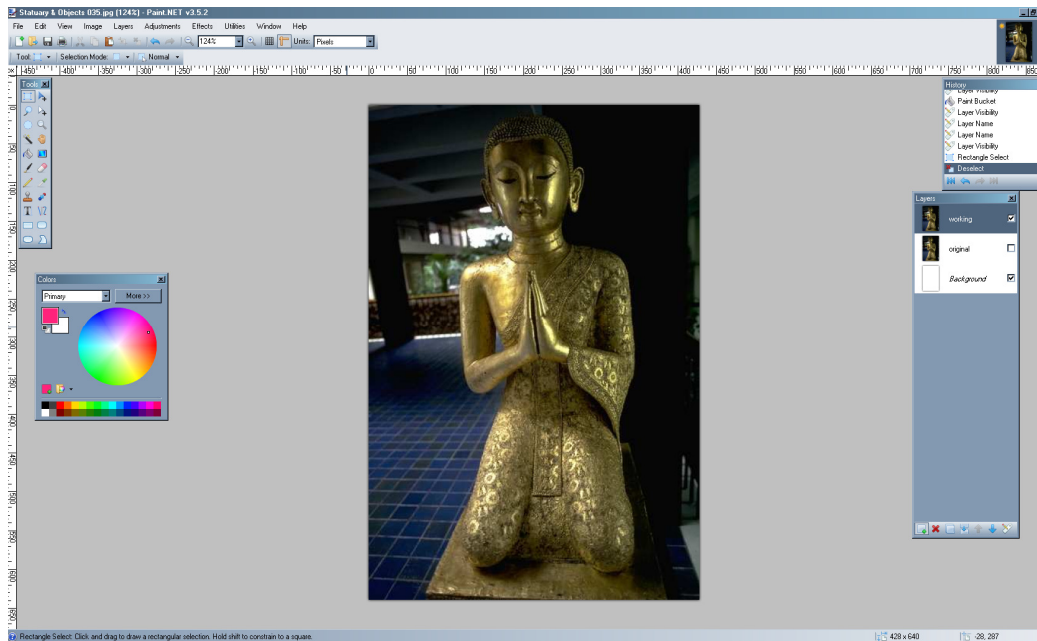
(I do this in case I go too many steps & mess things up, then I can delete my working layer & duplicate this one to work with.)



Select the Background layer (bottom one in image above to left), then click your Delete button on your keyboard to make it invisible. You may then apply white to the background by clicking on the paint bucket (5<sup>th</sup> tool down on the left in the tools pallet. But first, make sure white is showing in the top box on the Colors pallet as in image to left.) With the paint bucket selected, click on the background layer to fill it with white.

You'll be working on the top layer - rename it with the word working as you renamed the 2<sup>nd</sup> layer.

This is what my photo looks like in the paint.net window at this point:



## Brighten photo

First, let's brighten this photo a bit (but not too much as there are some bright spots on the statue we don't want to wash out. (You should be on the working layer.) Under the Adjustments menu, select Brightness/Contrast, then move the sliders until the photo looks as you want it to.

## Crop photo

Using the marquee tool (top/left one), click and drag your mouse to outline the area you want to be in your finished photo. Then click Image>Crop Selection.

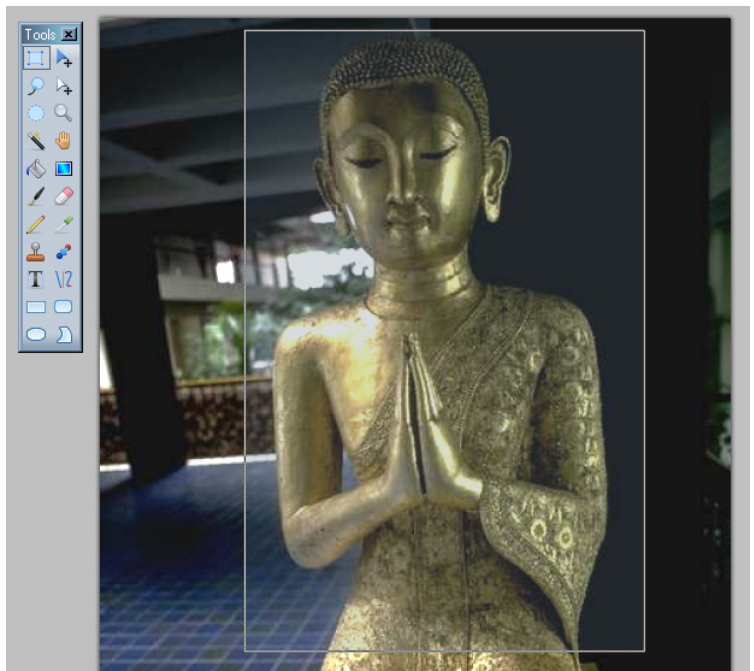
### **NOTE**

*At this or any point, if you want to undo your last step(s), click Ctrl+Z or Edit>Undo. You can redo the undone step(s) by clicking Ctrl+Y or Edit>Redo.*

## Remove background

Though not as easy and clean as using the pen tool in Photoshop to select areas, with a careful hand, you can remove the background from your photo.

First, zoom in on your image to magnify it many times. It may be larger than fits in the window, but you can scroll up, down and to the sides using the scroll bars at the bottom and right side of the paint.net window.



(You can also hold the Shift key down while moving your photo around by clicking on it.) Zoom in or out by holding the Ctrl key down and moving your mouse wheel up or down.

Use the Lasso tool (2<sup>nd</sup> one down on left in Tools pallet) to select areas to remove, then click the Delete button on your keyboard to remove that section. You'll see the white background. Don't worry about fine tuning this yet - with your photo magnified many times, you can't necessarily tell what's background & what's item at this point. (Play around with the lasso tool a bit to learn how it works - it's not simple, but it becomes easier & easier with a bit of practice. And you can always undo your last step(s) if needed.

When you've removed the background, zoom out to see your photo at its real size to see if there's any clean up you need to do with the zoom tool:



In the photo above, notice some roughness I need to clean up.

**NOTE**

You can use the Magic Wand tool (4<sup>th</sup> one down on the left) to select blocks of color, then can delete those selections - be sure to adjust the tolerance as needed:



This is as good as I could clean up the photo:

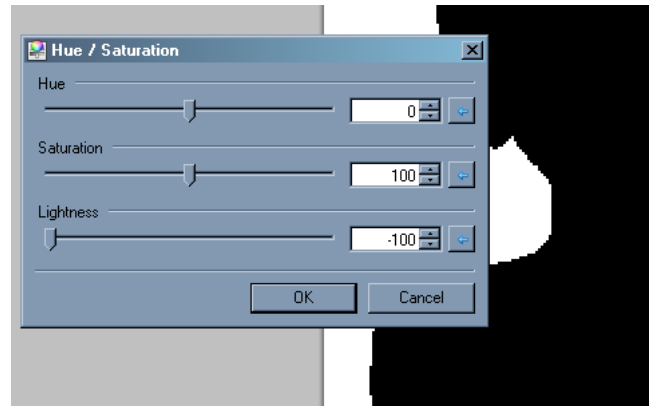


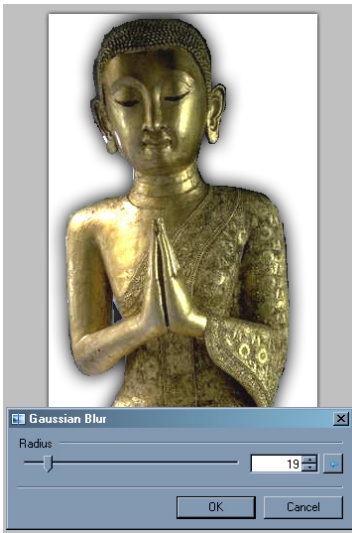
Perhaps a bit of a shadow will make it look better?

**Add Shadow**

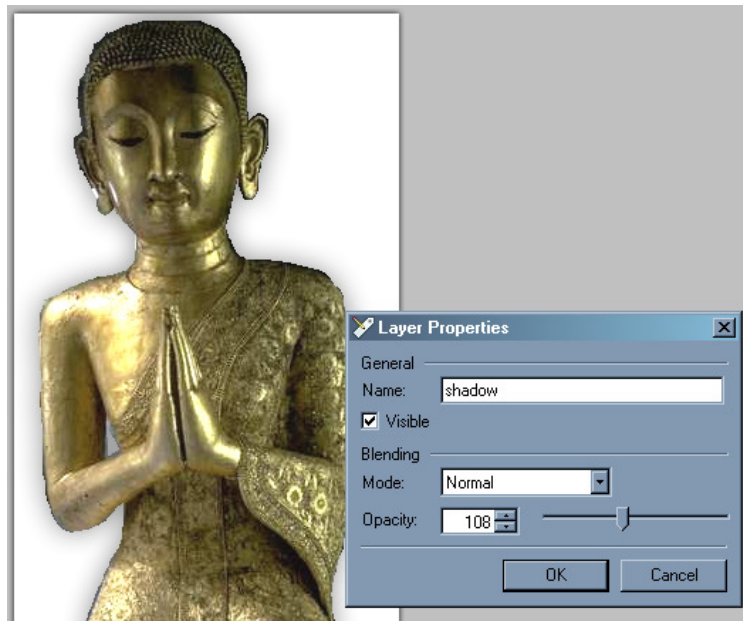
Duplicate the working layer. Un-check the top layer and rename the 2<sup>nd</sup> one to shadow. Under Adjustments, select Hues/Saturation & set lightness to -100 as seen to right.

Now, blur that shadow (Effects>Blur>Gaussian Blur):





If the shadow is too dark, select Layers>Layer Properties and adjust opacity as desired:



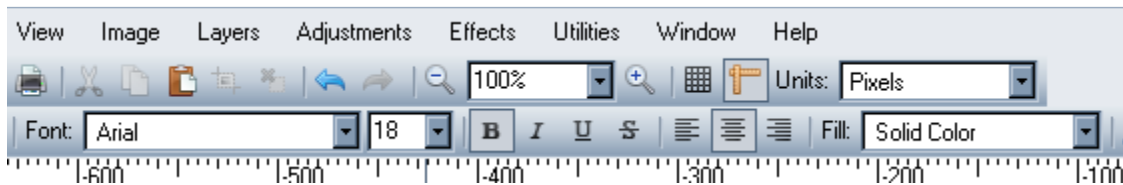
You can resize your photo under the Image menu. You should try different things also with the choices under the Adjustment menu. For non-eBay images, you may want to try some of the effects under that menu.

To save this layered photo as a JPG, you'll have to flatten it to one layer. Go to Image>Flatten. Rather than Save, I'd Save As (under file menu), so you won't have changed the original.

**AND ONE MORE THING...**

## Add Watermark

To add your eBay ID in text, you'll select the Text tool (T on the tool pallet) and choose your font details from the top of the window as shown in the below image. Choose the font color from the color pallet.



Type your ID on the photo where you want it placed such as in image to right. Save your flattened photo as a JPG.

To add your logo, with your item photo opened, open your logo image in paint.net, select it all (Ctrl+A), then copy it (Ctrl+C). Close your logo (Ctrl+W). Create a new layer on your item photo (Layer>Add New Layer), then paste your logo in (Ctrl+V). You'll see a box around the logo which you can resize by dragging its corners (hold the shift key while doing so to resize it proportionally) then click and drag the logo to the area you want it in. Flatten layers & save.



### **NOTE**

*As you'll see at [paint.net](http://paint.net), there are tutorials, plug-ins & even a community for this useful tool - and a PayPal button, so if you like it, please send them a few bucks towards future development.*

*I do not offer support for [paint.net](http://paint.net) - I got it only for the purpose of creating this tutorial.*

© Sally Milo, 2010

[Sales@GOing1nce.com](mailto:Sales@GOing1nce.com)

Going1nceLLC on ebay